

Jesus Is All The World To Me

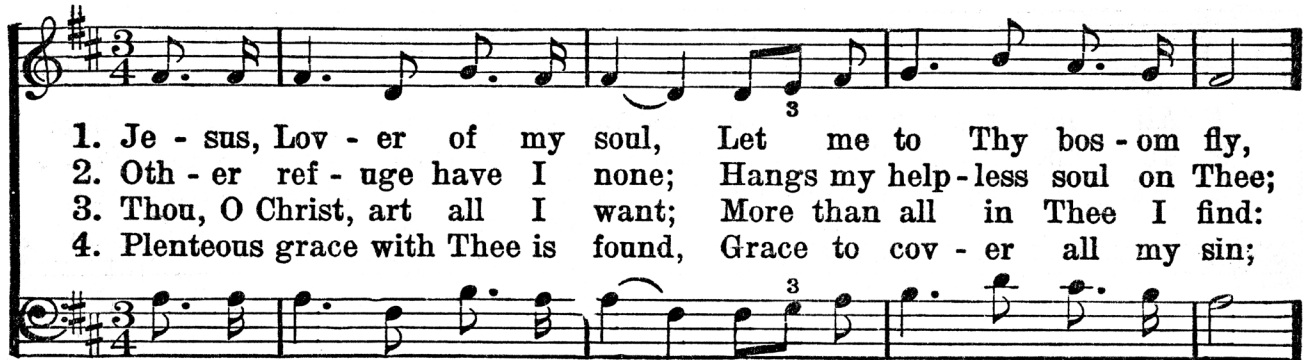
1. Je - sus is all the world to me, My life, my joy, my all;
 2. Je - sus is all the world to me, My friend in tri - als sore;
 3. Je - sus is all the world to me, And true to Him I'll be;
 4. Je - sus is all the world to me, I want no bet - ter friend;

He is my strength from day to day, With - out Him I would fall.
 I go to Him for bless - ings, and He gives them o'er and o'er.
 Oh, how could I this friend de - ny, When He's so true to me?
 I trust Him now, I'll trust Him when Life's fleet - ing days shall end.

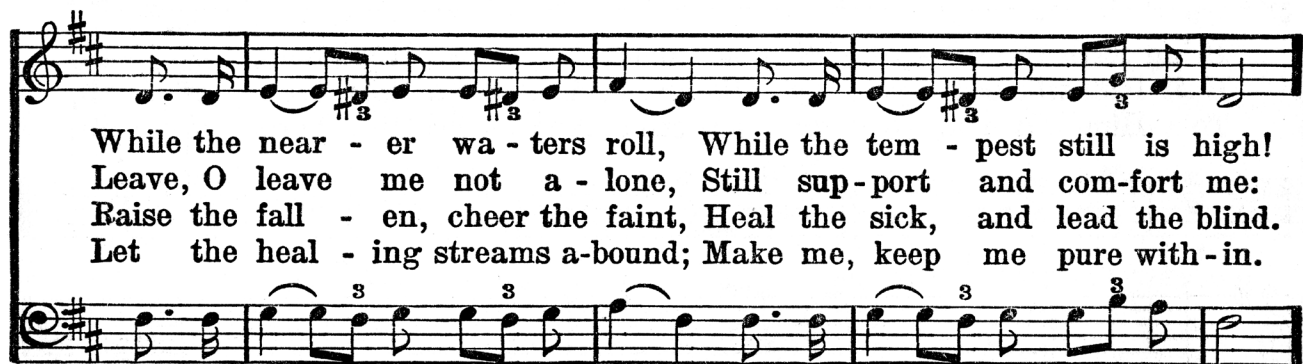
When I am sad, to Him I go, No oth - er one can cheer me so;
 He sends the sun - shine and the rain, He sends the harvest's gold - en grain;
 Fol - low - ing Him I know I'm right, He watches o'er me day and night;
 Beau - ti - ful life with such a friend; Beau - ti - ful life that has no end;

When I am sad He makes me glad, He's my friend.
 Sun - shine and rain, har - vest of grain, He's my friend.
 Fol - low - ing Him, by day and night, He's my friend.
 E - ter - nal life, e - ter - nal joy, He's my friend.

Jesus, Lover Of My Soul



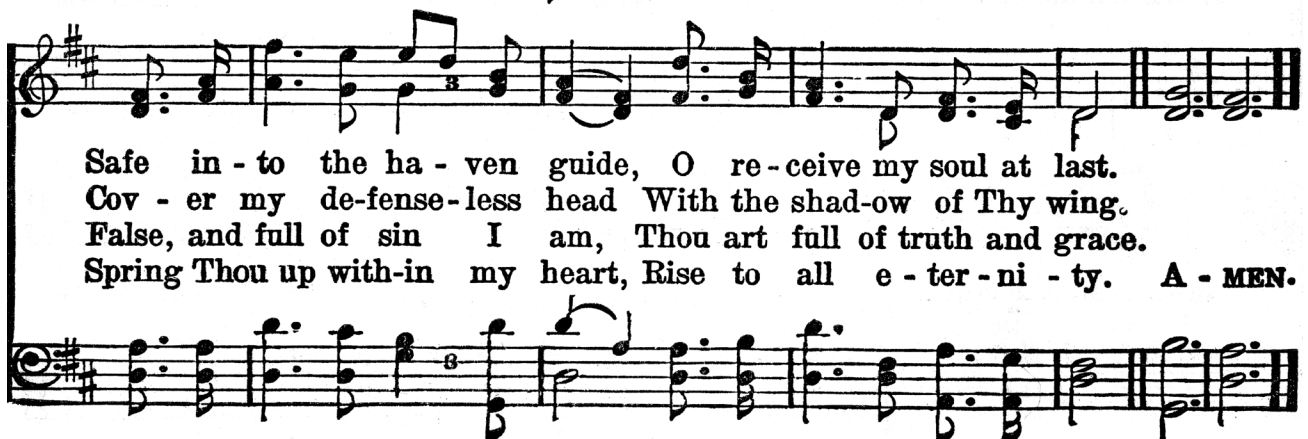
1. Je - sus, Lov - er of my soul, Let me to Thy bos - om fly,
2. Oth - er ref - uge have I none; Hangs my help - less soul on Thee;
3. Thou, O Christ, art all I want; More than all in Thee I find:
4. Plenteous grace with Thee is found, Grace to cov - er all my sin;



While the near - er wa - ters roll, While the tem - pest still is high!
Leave, O leave me not a - lone, Still sup - port and com - fort me:
Raise the fall - en, cheer the faint, Heal the sick, and lead the blind.
Let the heal - ing streams a - bound; Make me, keep me pure with - in.



Hide me, O my Sav - ior, hide, Till the storm of life is past;
All my trust on Thee is stayed, All my help from Thee I bring;
Just and ho - ly is Thy name, I am all un - right - eous - ness;
Thou of life the foun - tain art, Free - ly let me take of Thee;



Safe in - to the ha - ven guide, O re - ceive my soul at last.
Cov - er my de - fense - less head With the shad - ow of Thy wing.
False, and full of sin I am, Thou art full of truth and grace.
Spring Thou up with - in my heart, Rise to all e - ter - ni - ty. A - MEN.

Jesus Remembered You

1. Don't for-get Je - sus when long is the way; Don't for-get Je - sus when
 2. Don't for-get Je - sus! When tempted to sin, Trust in His prom-ise—He'll
 3. Don't for-get Je - sus, for He thought of you When you had wandered, when
 4. Don't for-get Je - sus, but on Him re - ly! Time, like a riv - er, is

dark is the day; Don't for-get Je - sus, He'll hear when you pray,
 help you to win; In all your bat - tles, with - out and with - in,
 you where un - true; Je - sus was faith - ful the whole jour - ney thro',
 wan - der - ing by! Sure - ly you'll need Him the hour you must die,

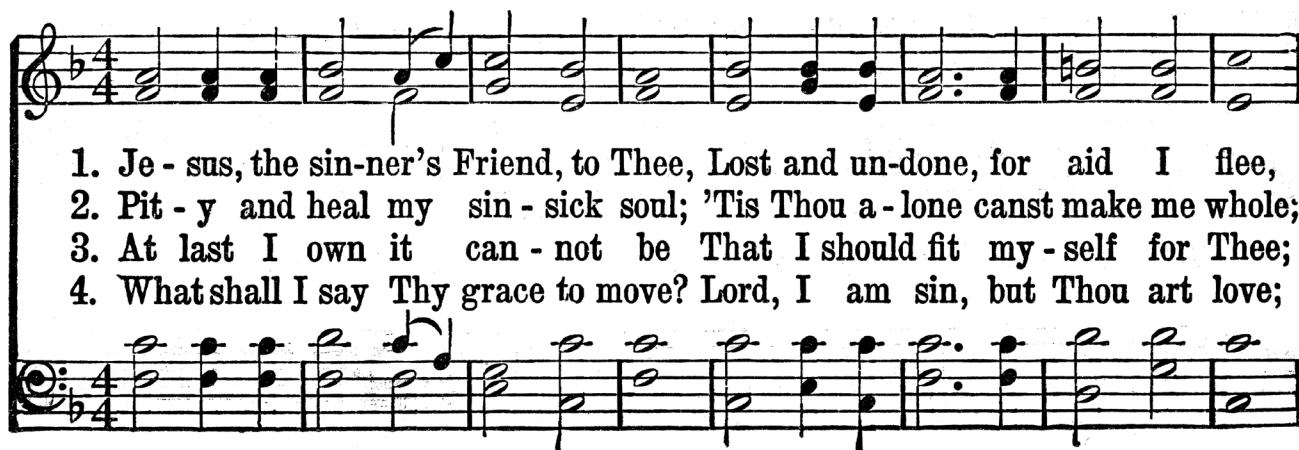
CHORUS.

O don't, don't for-get Je - sus! Don't for - get Je - sus,

don't for-get Je - sus, So faith-ful, so lov - ing and true;.....
 so lov - ing and true;

When you were lost in dark-ness and sin, Je - sus re-mem-bered you!

Jesus, The Sinner's Friend



1. Je - sus, the sin-ner's Friend, to Thee, Lost and un-done, for aid I flee,
2. Pit - y and heal my sin - sick soul; 'Tis Thou a - lone canst make me whole;
3. At last I own it can - not be That I should fit my - self for Thee;
4. What shall I say Thy grace to move? Lord, I am sin, but Thou art love;



Wear - y of earth, my - self and sin; Open Thine arms, and take me in.
Dark, till in me Thine im-age shine, And lost I am till Thou art mine.
Here, then, to Thee I all re - sign; Thine is the work, and on - ly Thine.
I give up ev - 'ry plea be - side—Lord, I am lost, but Thou hast died. A-MEN.

Just When I Need Him Most

1. Just when I need Him, Je - sus is near, Just when I fal - ter,
 2. Just when I need Him, Je - sus is true, Nev - er for - sak - ing
 3. Just when I need Him, Je - sus is strong, Bear - ing my bur - dens
 4. Just when I need Him, He is my all, An - swer - ing when up -

just when I fear; Read - y to help me, read - y to cheer,
 all the way thro'; Giv - ing for bur - dens pleas - ures a - new,
 all the day long; For all my sor - row giv - ing a song,
 on Him I call; Ten - der - ly watch - ing lest I should fall,

CHORUS.

Just when I need Him most. Just when I need Him most,

Just when I need Him most; Je - sus is near to

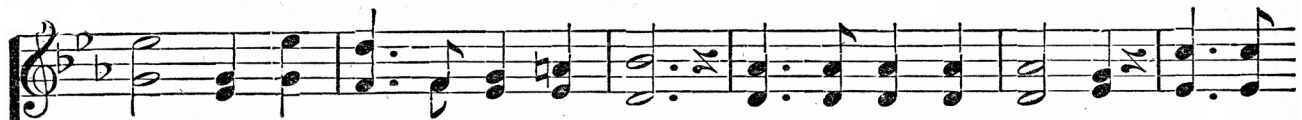
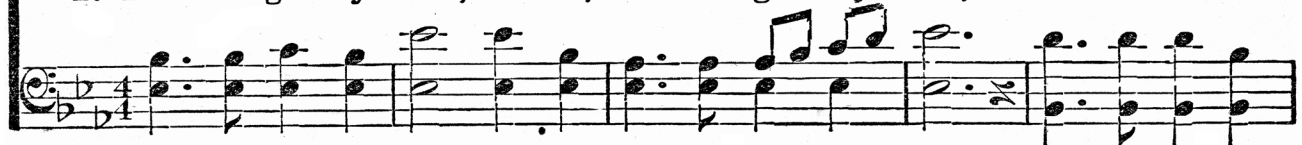
com - fort and cheer, Just when I need Him most. A - MEN.

Lead Me Gently Home, Father

SOLO OR DUET. *ad lib.*



1. Lead me gen-tly home, Father, Lead me gen-tly home, When life's toils are
2. Lead me gen-tly home, Father, Lead me gen-tly home, In life's dark-est



end-ed, And parting days have come, Sin no more shall tempt me, Ne'er from hours, Father, When life's troubles come, Keep my feet from wand'ring, Lest from



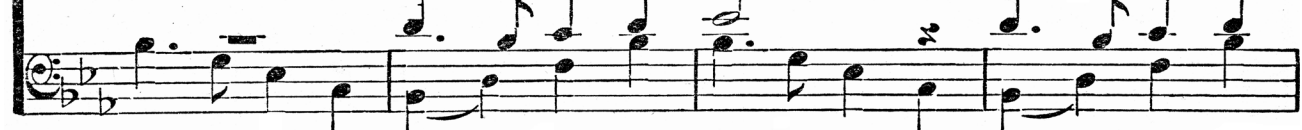
Thee I'll roam, If Thou'lt on-ly lead me, Father, Lead me gen-tly home.
Thee I roam, Lest I fall up-on the wayside, Lead me gen-tly home.



REFRAIN.



Lead me gen-tly home, Fa-ther Lead me gen-tly,
Lead me gen-tly home, Fa-ther, Lead me gen-tly home, Fa-ther,



Lest I fall up-on the way-side, Lead me gen-tly home.
gen-tly home.

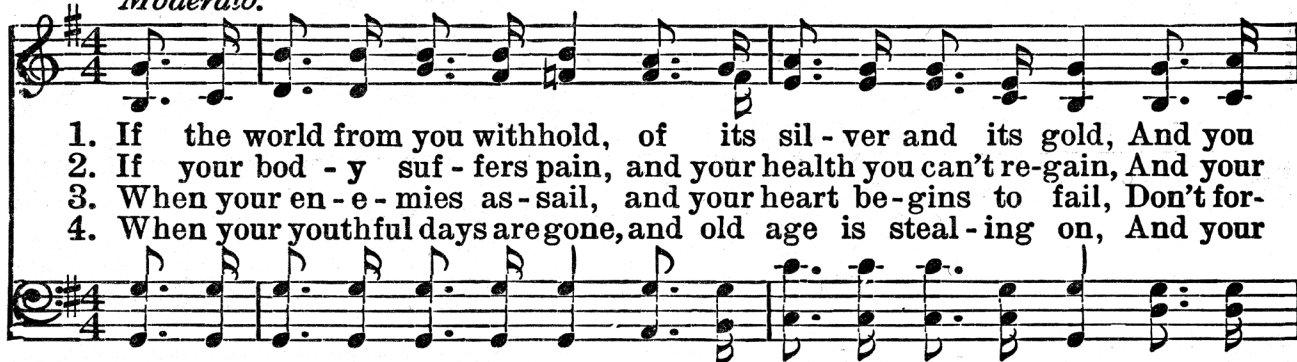


Leave It There

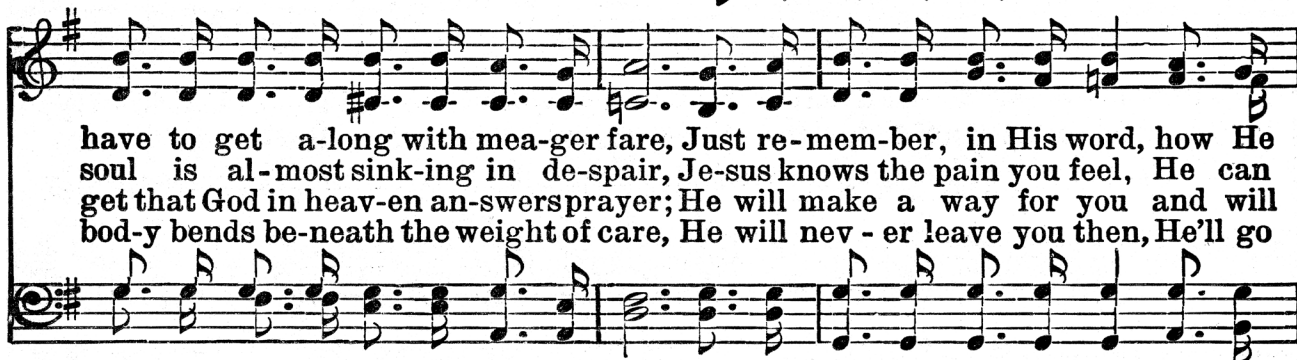
2 Page Spread - Turn Page

Leave It There

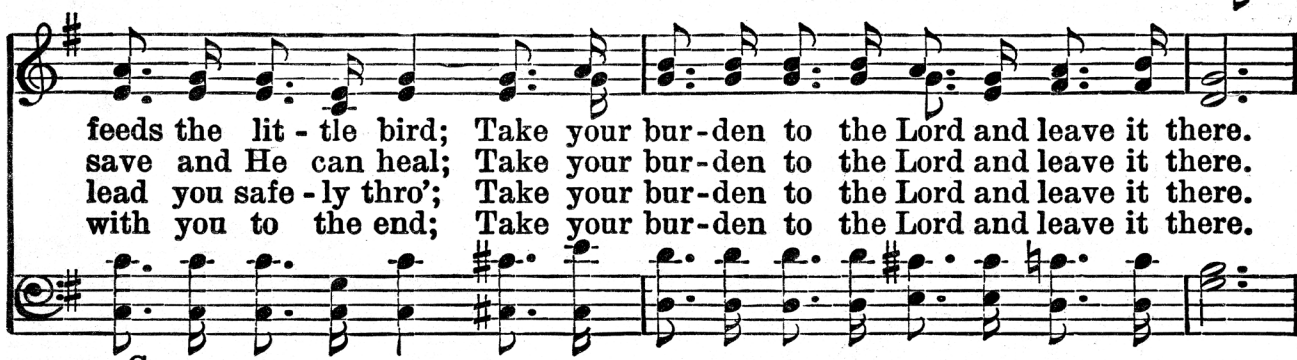
Moderato.



1. If the world from you withhold, of its sil-ver and its gold, And you
 2. If your bod-y suf-fers pain, and your health you can't re-gain, And your
 3. When your en-e-mies as-sail, and your heart be-gins to fail, Don't for-
 4. When your youthful days are gone, and old age is steal-ing on, And your

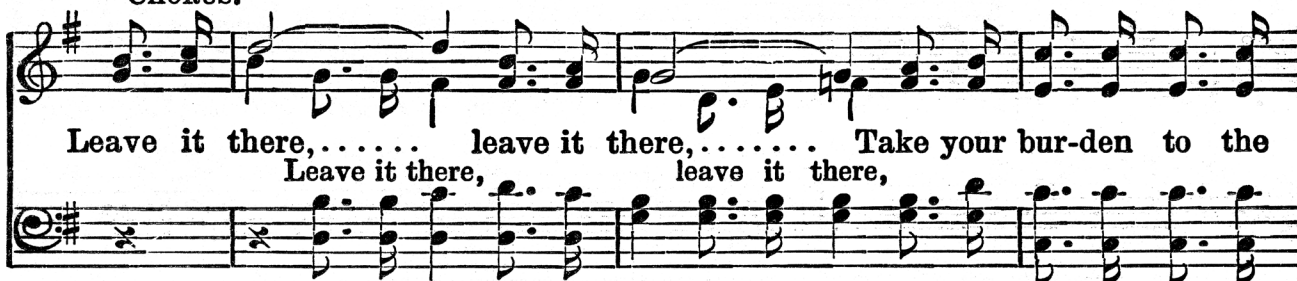


have to get a-long with mea-ger fare, Just re-mem-ber, in His word, how He
 soul is al-most sink-ing in de-spair, Je-sus knows the pain you feel, He can
 get that God in heav-en an-swers prayer; He will make a way for you and will
 bod-y bends be-neath the weight of care, He will nev-er leave you then, He'll go

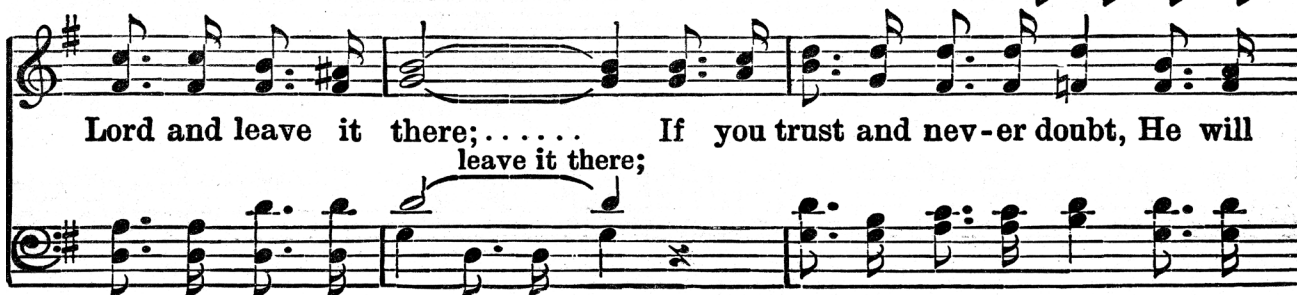


feeds the lit-tle bird; Take your bur-den to the Lord and leave it there.
 save and He can heal; Take your bur-den to the Lord and leave it there.
 lead you safe-ly thro'; Take your bur-den to the Lord and leave it there.
 with you to the end; Take your bur-den to the Lord and leave it there.

CHORUS.



Leave it there,..... leave it there,..... Take your bur-den to the
 Leave it there, leave it there,



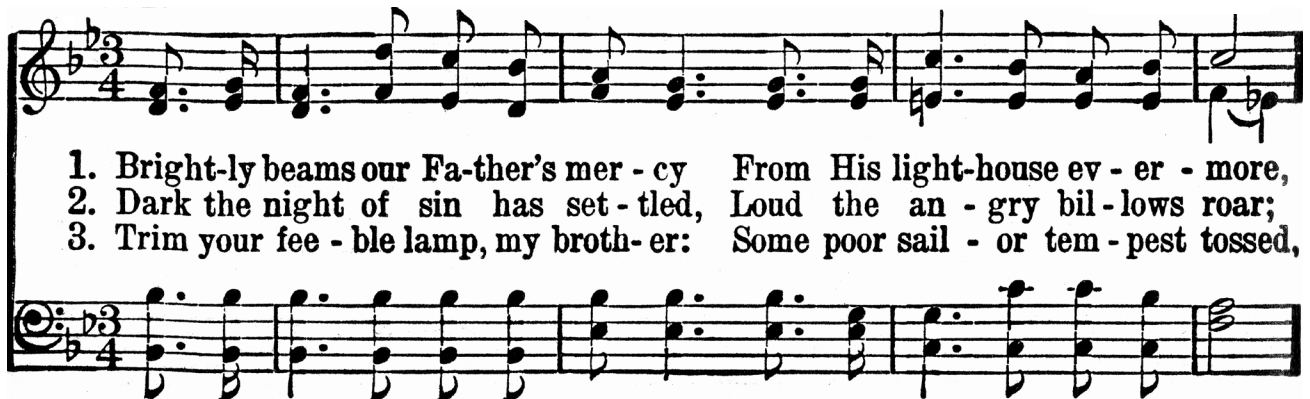
Lord and leave it there;..... If you trust and nev-er doubt, He will
 leave it there;

Leave It There (Continued)

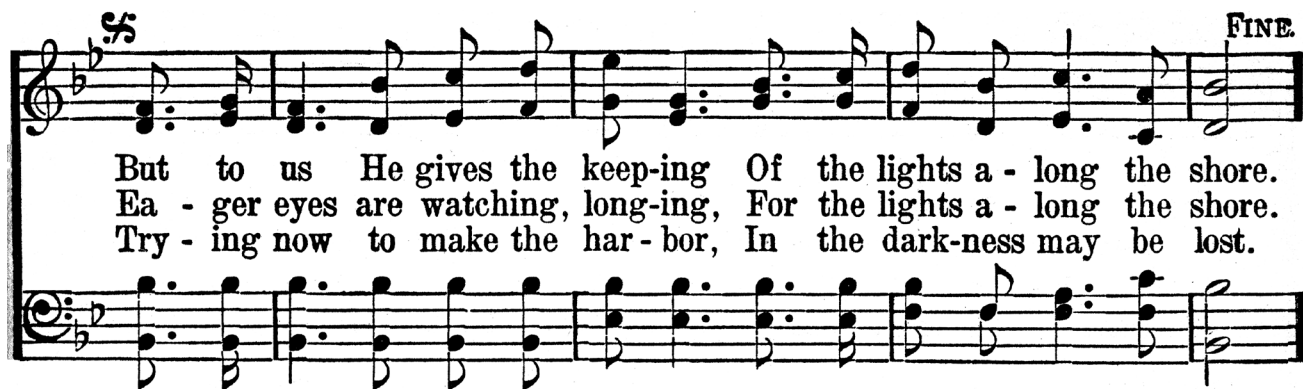
Sure-ly bring you out; Take your burden to the Lord and leave it there
leave it there.

The image shows a musical score for two staves. The top staff is in treble clef with a key signature of one sharp (F#). The bottom staff is in bass clef with the same key signature. The music consists of a series of chords and melodic lines. The lyrics are written below the top staff, with a long dotted line indicating a sustained note or a long phrase. The score ends with a double bar line.

Let The Lower Lights Be Burning

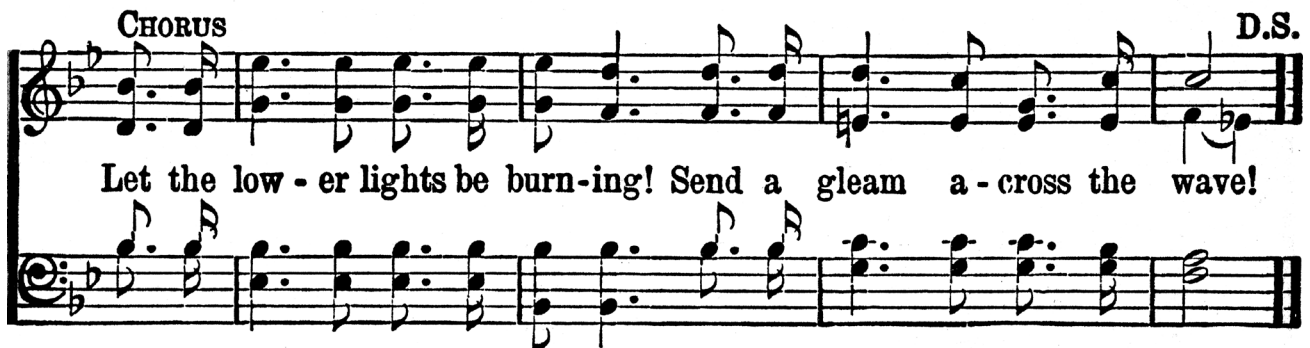


1. Bright-ly beams our Fa-ther's mer - cy From His light-house ev - er - more,
2. Dark the night of sin has set - tled, Loud the an - gry bil - lows roar;
3. Trim your fee - ble lamp, my broth - er: Some poor sail - or tem - pest tossed,



But to us He gives the keep - ing Of the lights a - long the shore.
Ea - ger eyes are watch - ing, long - ing, For the lights a - long the shore.
Try - ing now to make the har - bor, In the dark - ness may be lost.

D.S.—Some poor faint - ing, struggling sea - man You may res - cue, you may save.



CHORUS **D.S.**
Let the low - er lights be burn - ing! Send a gleam a - cross the wave!